

Oct 9<sup>th</sup> 1893 -  
Survey made at Plain City

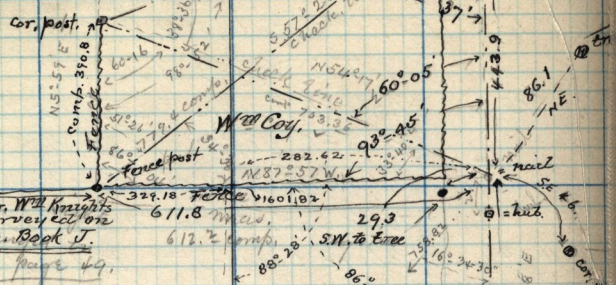
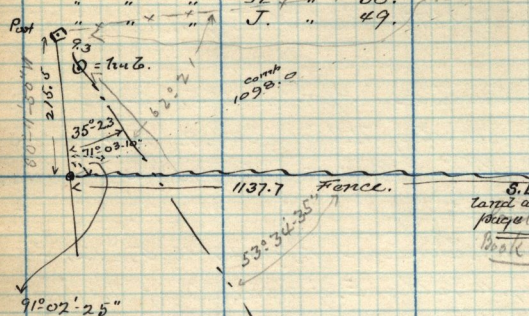
for  
W<sup>st</sup> Coy. 2<sup>nd</sup> S.E. 1/4 & S.W. 1/4

& Sec. 32, T. 7. N. R. 2. W.

See also Books B - page 178.

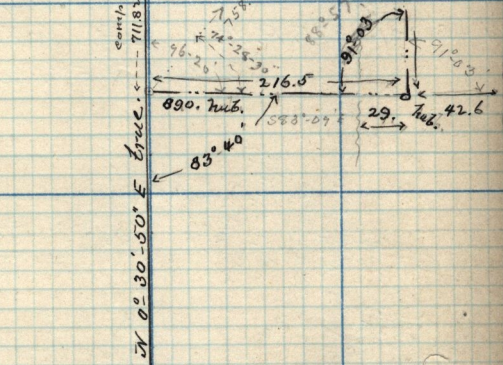
H. " " 35.

J. " " 49.



Moroni Stearns,  
Formerly D. C. Thomas

Apr. 17, this was found to be 2175.34 ft.  
1674.35  
x 35° 11' 10" W true



35° 42'

415. fence

235. fence  
89° 52' 30"  
1912 23' 30"  
29.2 fence  
N 54° 41' 20" E Erec  
Berlo. pk.

S.E. cor of Clamney  
or Fred Mackey's  
fence.

S.E. Cor. S.W. 1/4  
Sec. 32, T. 7. N. R. 2. W.